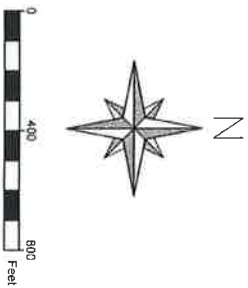


**LEGEND**

- GM-1  
S=0.0%  
D=0.0%
- PERIMETER GAS MONITORING WELL LOCATION  
METHANE CONCENTRATION % VOLUME  
H2O INDICATES WATER ABOVE THE SCREENED INTERVAL
- S = SHALLOW
- I = INTERMEDIATE
- D = DEEP

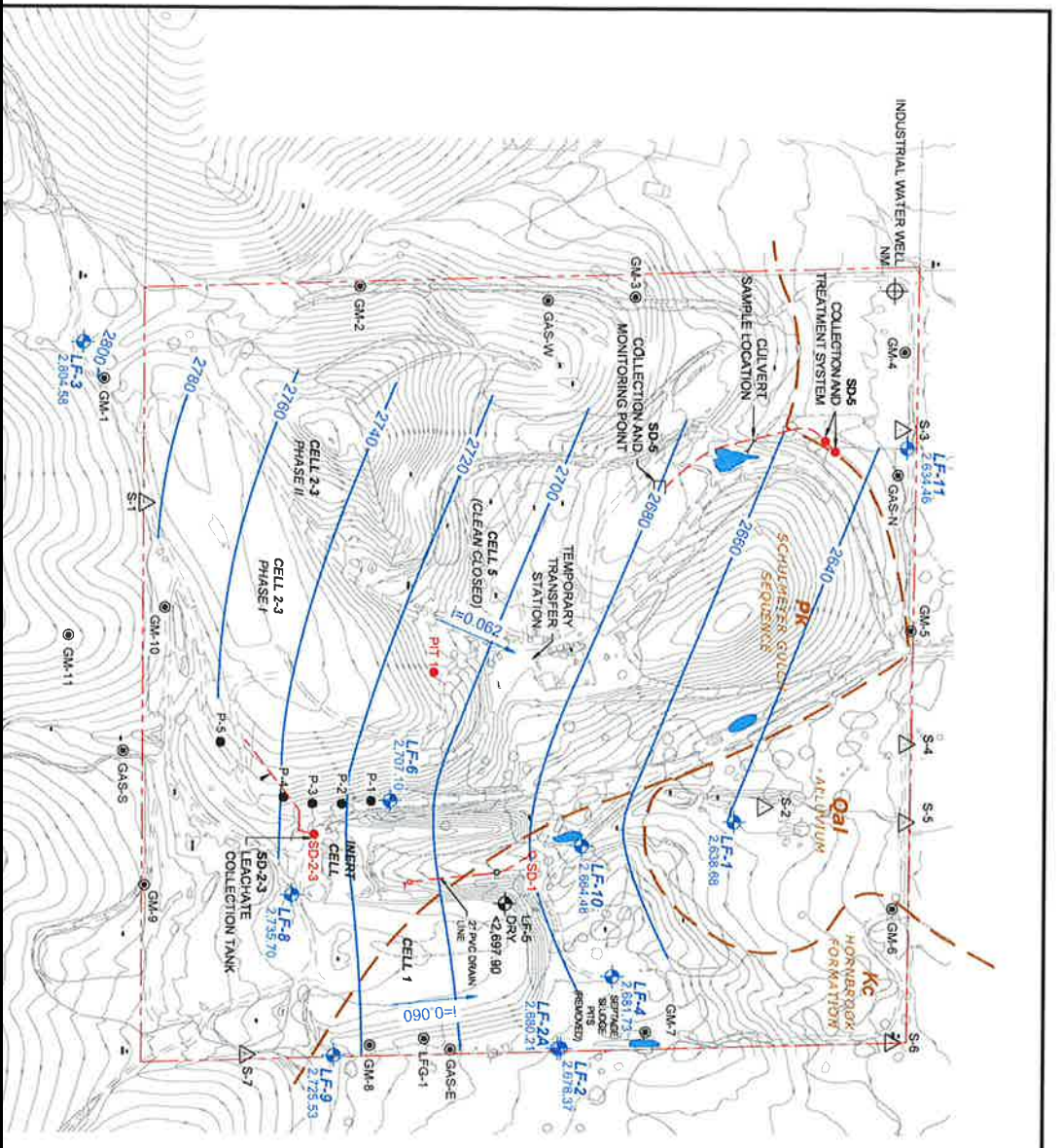
- LF-1  
GROUNDWATER MONITORING WELL LOCATION
- GM-10  
OLD PERIMETER GAS MONITORING WELL, NO LONGER PART OF PERIMETER GAS MONITORING NETWORK

POINT NUMBER	WELL	NORTHING (NAD83)	EASTING (NAD83)	G.S. ELEV	LATITUDE	LONGITUDE
3000	GM-1	2502466.2	6397427.3	2819.8	41.68803830	-122.60139700
3001	GM-2	2503346.2	6397103.3	2760.4	41.7043704	-122.60257358
3002	GM-3	2504285.5	6397141.4	2730.2	41.70304314	-122.60248005
3003	GM-4	2505227.4	6397326.6	2646.3	41.70560358	-122.60182518
3004	GM-5	2505253.5	6398278.2	2646.4	41.70565324	-122.59834829
3005	GM-6	2505195.7	6399222.5	2699.7	41.7055215	-122.59467245
3006	GM-7	2504345.7	6399248.9	2899.2	41.70322789	-122.5929921
3007	GM-8	2503397.1	6399598.8	2725.4	41.70652523	-122.59309296
3008	GM-9	2502618.5	6399154.4	2817.7	41.68847863	-122.59506482
3009	GM-10	2502682.3	6398206.6	2802.6	41.68863589	-122.59845906
3010	GM-11	2502242.4	6398275.7	2888.4	41.68750000	-122.59833300



LANDFILL GAS MONITORING  
 SISKIYOU COUNTY  
 YREKA LANDFILL  
 YREKA, CALIFORNIA





**LEGEND**

- LF-1**  
2,693.68  
MONITORING WELL LOCATION  
GROUNDWATER ELEVATION, MSL FT
- 2700  
GROUNDWATER ELEVATION  
CONTOUR INTERVAL: 20 FT
- $\pm 0.062$   
DIRECTION AND MAGNITUDE OF  
GROUNDWATER GRADIENT: FT/FT
- SPRING SAMPLING POINT
- SPRING DRAIN
- STORAGE TANKS
- POND
- SURFACE WATER SAMPLING POINT  
(S-1 AND S-2 UNDER ORDER NO. 89-68, S-3 THROUGH S-6  
UNDER ORDER 2014-057-DWD)
- GAS MONITORING WELL LOCATION
- PIEZOMETER LOCATION
- GEOLOGIC CONTACT
- OLDER QUARTERNAARY ALUVIUM
- CRETACEOUS HORNBRÖÖK FORMATION (SANDSTONE)
- SCHULMEYER GULCH SEQUENCE (META SEDIMENT)



GROUNDWATER MONITORING  
SISKIYOU COUNTY  
CITY OF YREKA LANDFILL  
YREKA, CALIFORNIA