

Shasta Valley Groundwater Basin Boundary Modification



Potential Results from boundary change

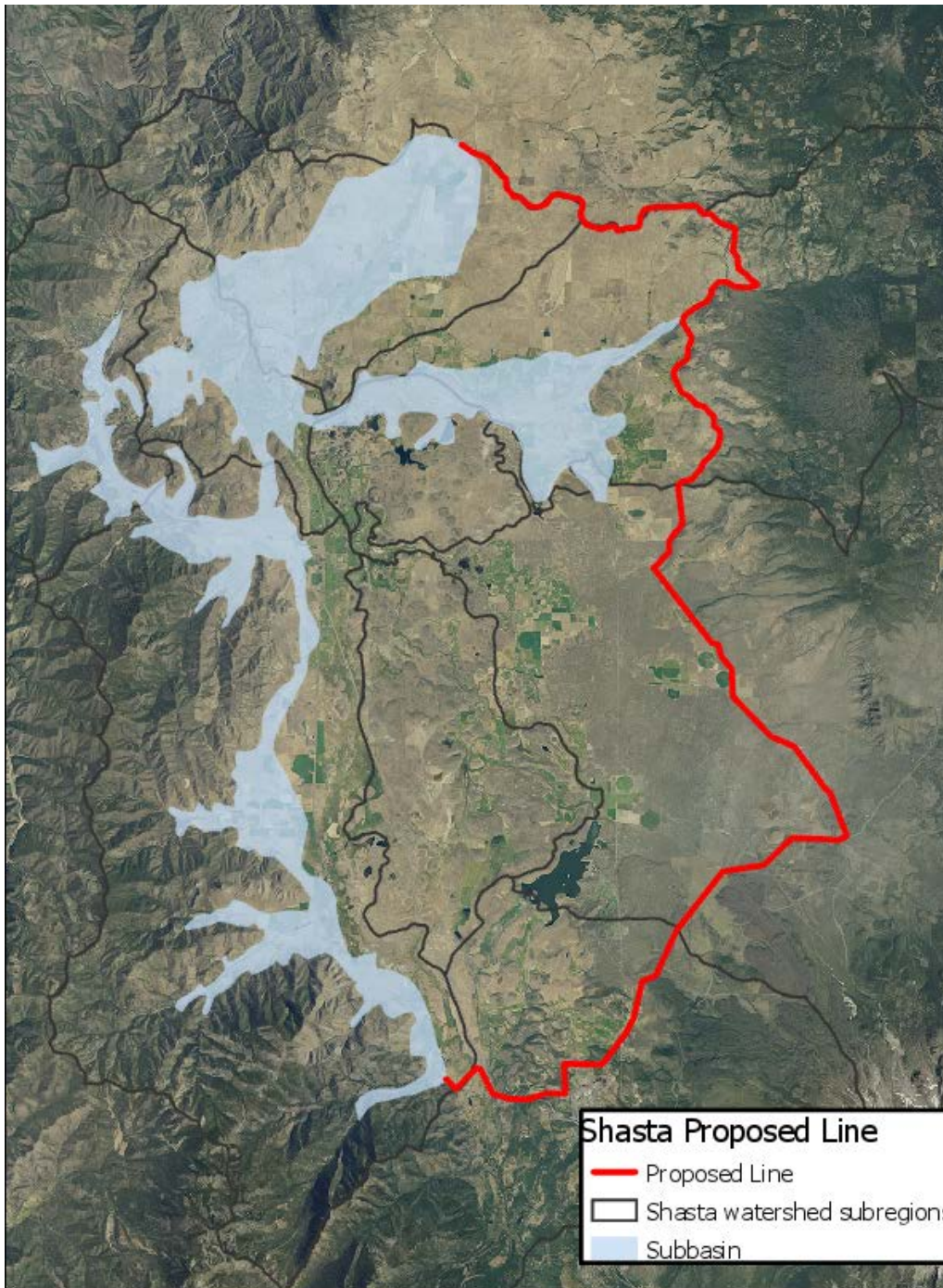
- * Inclusion in locally controlled plan, built on local knowledge, studies, & input
- * Reliable water availability knowledge & planning based on GSP
- * Recharge benefits – within basin boundary
 - * Legislation language
- * Project & funding opportunities – Grant & GSP related projects can only apply within the basin boundary
- * Seat at table & input to GSA & GSP development
- * A “process” is in place to determine overdraft regions or negative groundwater supplies, & develop strategy to improve

Potential Results from boundary change

- * More regulation & oversight
- * Potential for additional fees, costs, etc...
 - * Public process
- * Worst case scenarios around California - potential restrictions, shut-offs, or capping
 - * **Not expected in Siskiyou County**
- * Potential data & access intrusion
- * Does not modify, determine or authorize surface water or groundwater rights

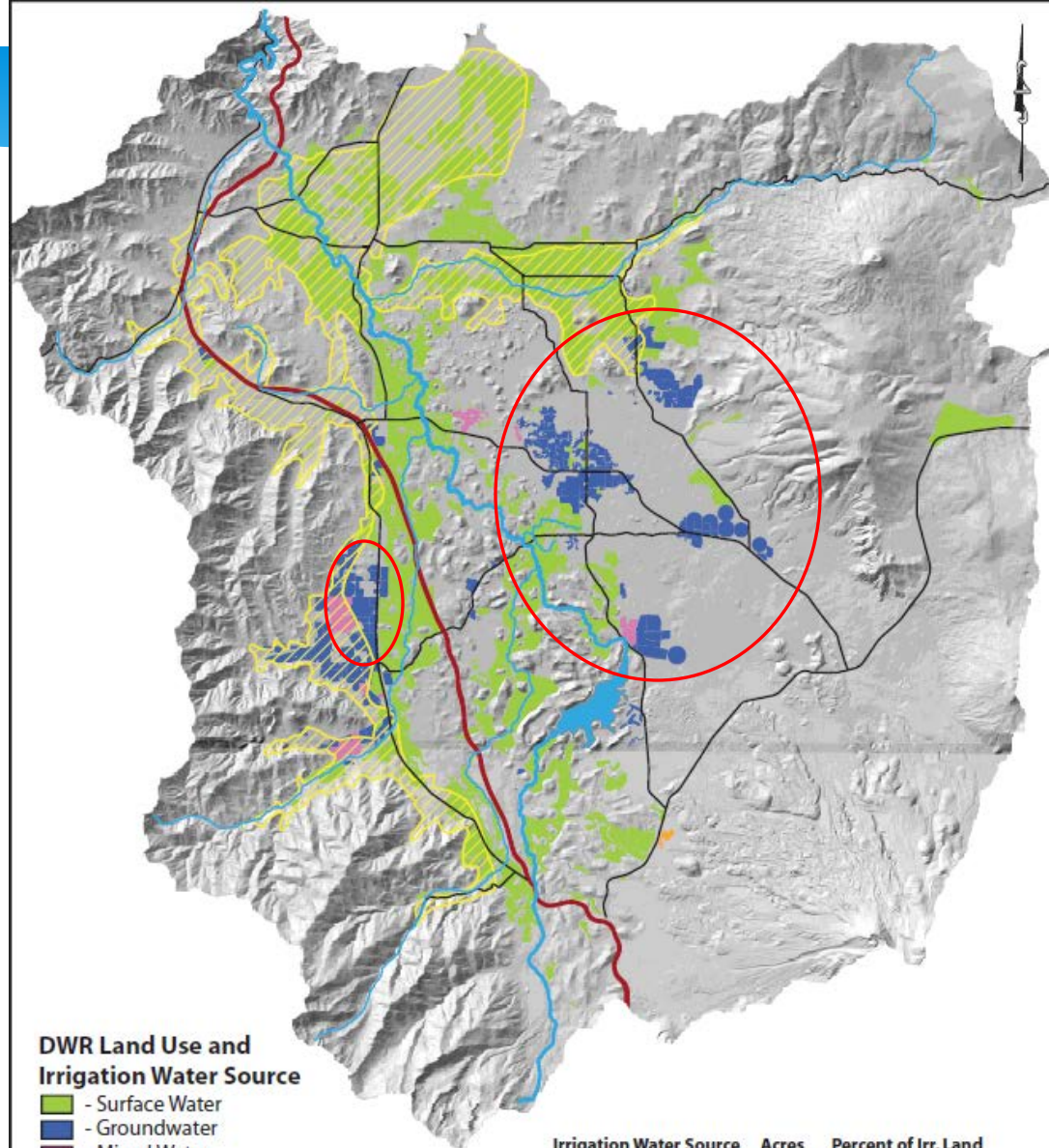
Proposed boundary

- * Pluto's cave region provides abundant groundwater
- * Shasta River connection
- * Over 52% of groundwater irrigation use
- * Encompasses large use area
- * Covers remaining water use in Gazelle/Grenada subregion



Supporting Technical Reports

- * *“Geology & Groundwater Features of Shasta Valley, Siskiyou County California”* Mack (1960)
- * *“Shasta Valley, Siskiyou County Groundwater Data Needs Assessment”* DWR/Ward (2011)
- * *“Managing Groundwater for Environmental Stream Temperature”* Buck (2013)
- * *“Shasta Valley Groundwater Basin”* Bulletin 118 (2004)
- * *“Template for components that would be desirable in order to prepare a groundwater management plan for the Shasta Valley Siskiyou County, California”* Davids Engineering, Inc. (2012)



DWR Land Use and Irrigation Water Source

- - Surface Water
- - Groundwater
- - Mixed Water
- - Recycled Water

Current Bulletin 118 Groundwater Basin Boundary

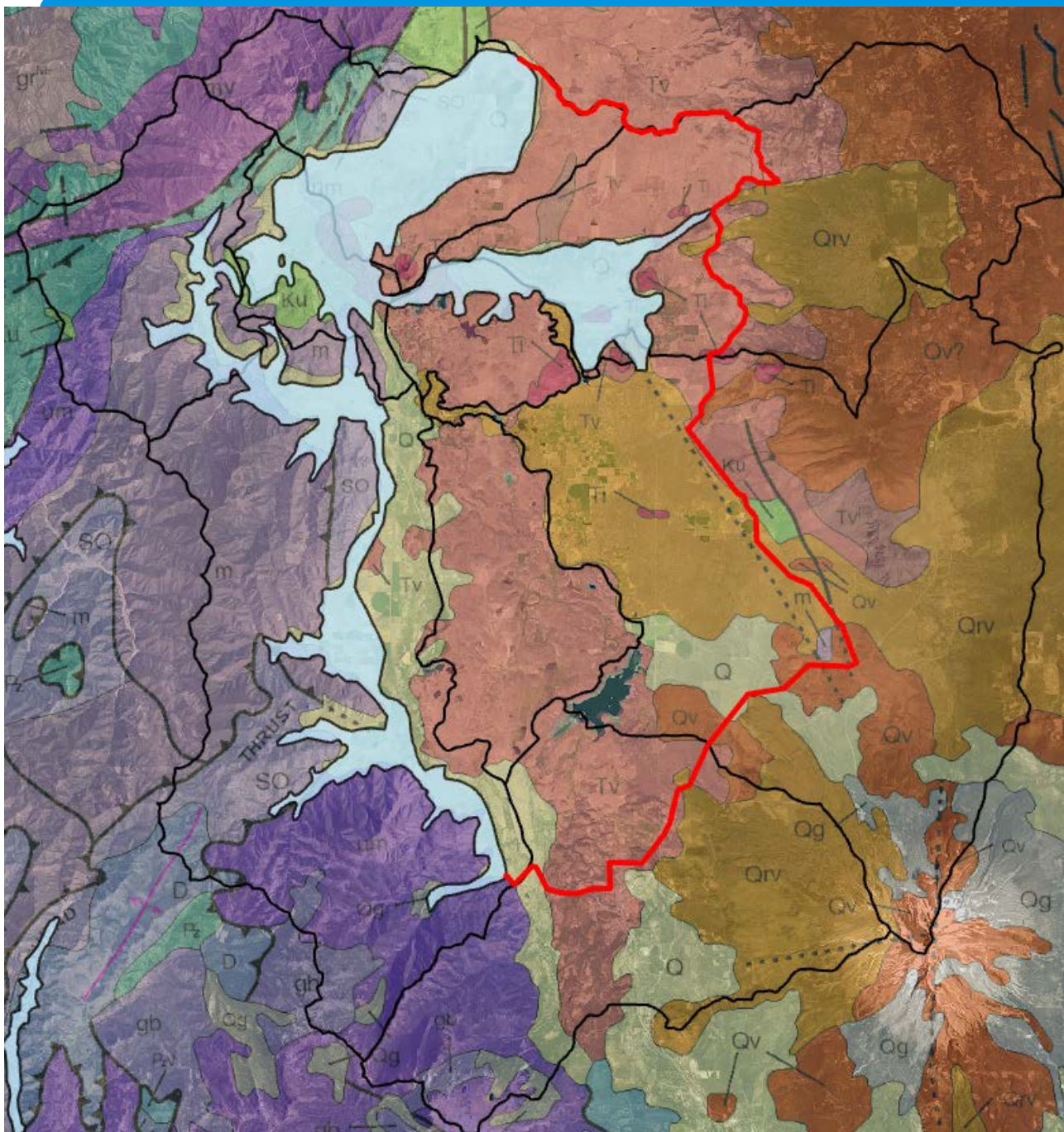
- - Basin 1-4 Boundary

Irrigation Water Source	Acres	Percent of Irr. Land
Surface Water	44,511	79.5%
Groundwater	10,190	18.2%
Mixed Water	1,233	2.02%
Recycled Water	68	0.1%

Total Irrigated Acres 56,002

Note: This map is made to illustrate the current Bulletin 118 groundwater basin boundary and DWR Land Use Survey and Irrigation water source, and is not intended for any other use.
 Base: 2015 Land Use Survey, Department of Water Resources, CA;
 Bulletin 118, Department of Water Resources, CA; Basin 1-004

Proposed boundary



QUATERNARY DEPOSITS

- Qs** Extensive marine and nonmarine sand deposits, generally near the coast or desert playas
- Q** Alluvium, lake, playa, and terrace deposits; unconsolidated and semi-consolidated
- Qls** Selected large landslides
- Qg** Glacial till and moraines. Found at high elevations mostly in the Sierra Nevada and Klamath Mountains
- Qoa** Older alluvium, lake, playa, and terrace deposits
- QPc** Pleistocene and/or Pliocene sandstone, shale, and gravels deposits; mostly loosely consolidated

QUATERNARY VOLCANIC ROCKS

- Qrv** Recent (Holocene) volcanic flow rocks; minor pyroclastic deposits
- Qrvf** Recent (Holocene) pyroclastic and volcanic mudflow deposits
- Qv** Quaternary volcanic flow rocks; minor pyroclastic deposits
- Qvf** Quaternary pyroclastic and volcanic mudflow deposits

TERTIARY VOLCANIC ROCKS

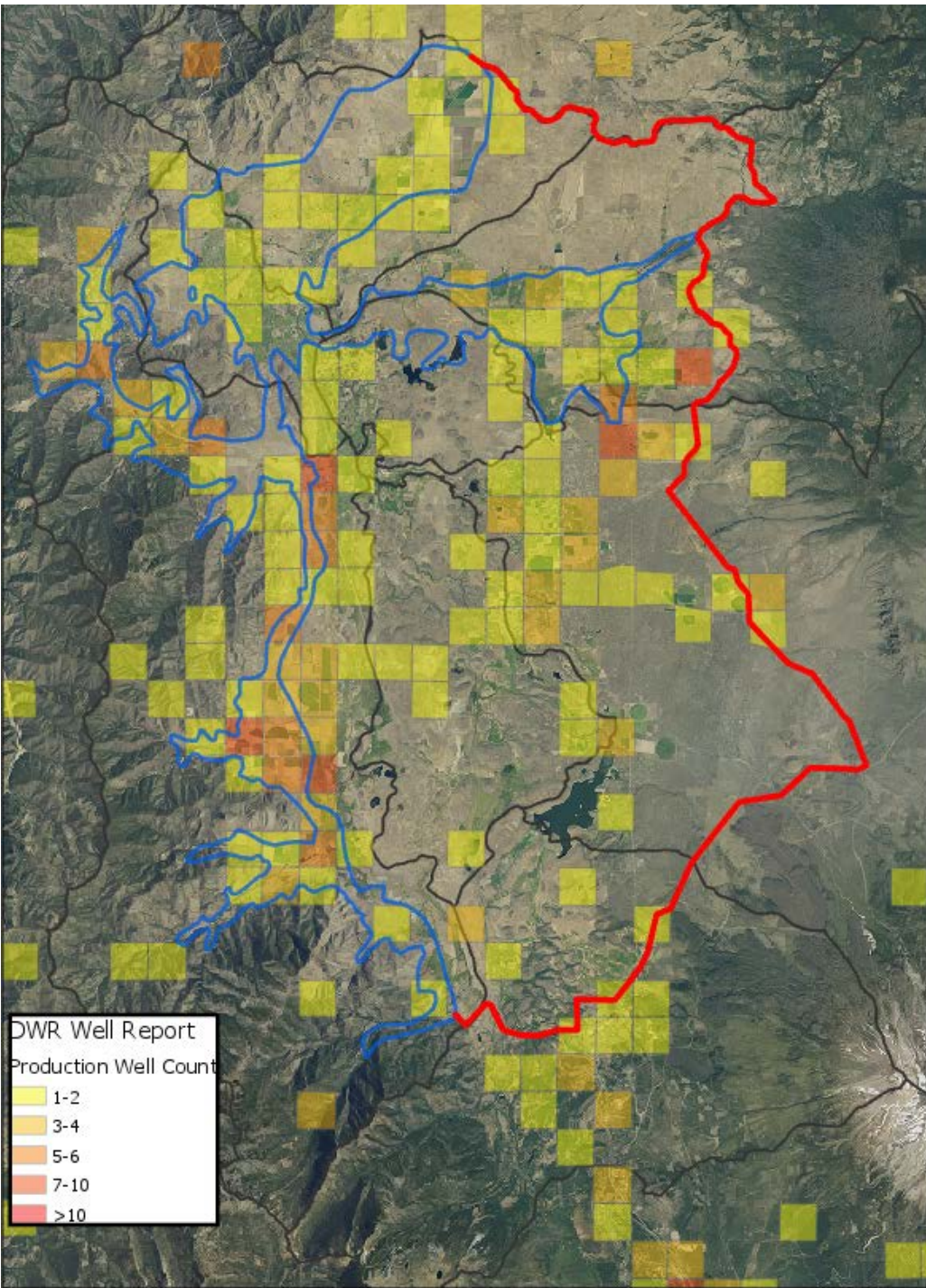
- Tv** Tertiary volcanic flow rocks; minor pyroclastic deposits
- Tvf** Tertiary pyroclastic and volcanic mudflow deposits.
- Ti** Tertiary intrusive rocks; mostly shallow (hypabyssal) plugs and dikes

MESOZOIC SEDIMENTARY AND METASEDIMENTARY ROCKS

- Ku** Upper Cretaceous sandstone, shale, and conglomerate

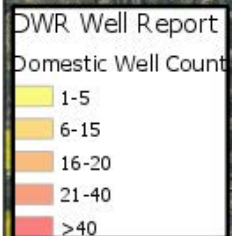
Proposed boundary

DWR Production Well Count
per Township Range and Section



Proposed boundary

DWR Domestic Well Count
per Township Range and Section



Process to submit Proposed Basin Boundary Modification

- * Public outreach & accompanying documentation – **On-going**
 - * Provide comment & subsequent recommendation to the GSA board of directors – **Flood Control directed continued research**
-
- * Information gathering & boundary line development - **Currently**
 - * Public meetings regarding proposed draft line – **5/31**
-
- * Groundwater advisory committee recommendation - **June**
 - * Notify DWR by writing, of intent to modify - **June**
 - * GSA decision & approving resolution - **June**
 - * Submit application

Timeline for Boundary Adoption

- * Notification of Intent to DWR –
- * Public outreach workshop – May 31
- * Public Hearing – June 12th
- * Resolution approving GSA to submit application – June 12th
- * Finalize application June 13th to 30th
- * Submit Application – June 30 (or when ready)
- * 30-day public comment – June 30-July 30
- * Draft release – Fall 2018?
- * Final modifications release – Fall/Winter 2018
- * Basin adopted under Bulletin 118 – 2020?

Public comment

- * GSA welcomes all comments from public
 - * Letters/email of support or opposition
- * Send to:
mparker@co.siskiyou.ca.us
Subject – Shasta Groundwater Basin Boundary
- * Public Hearing
- * Official comment during DWR review period (6/30-7/30)

Proposed boundary

