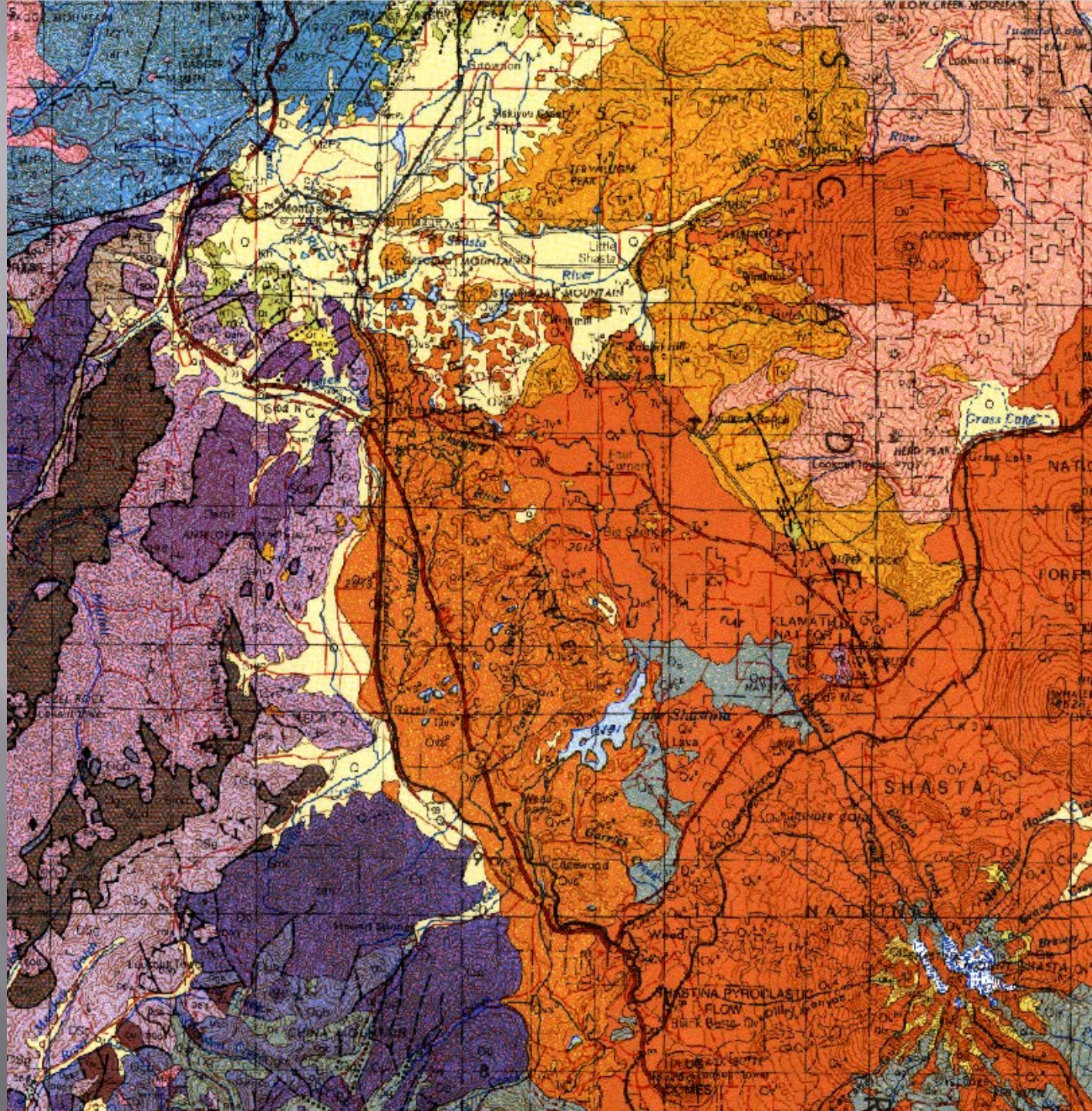
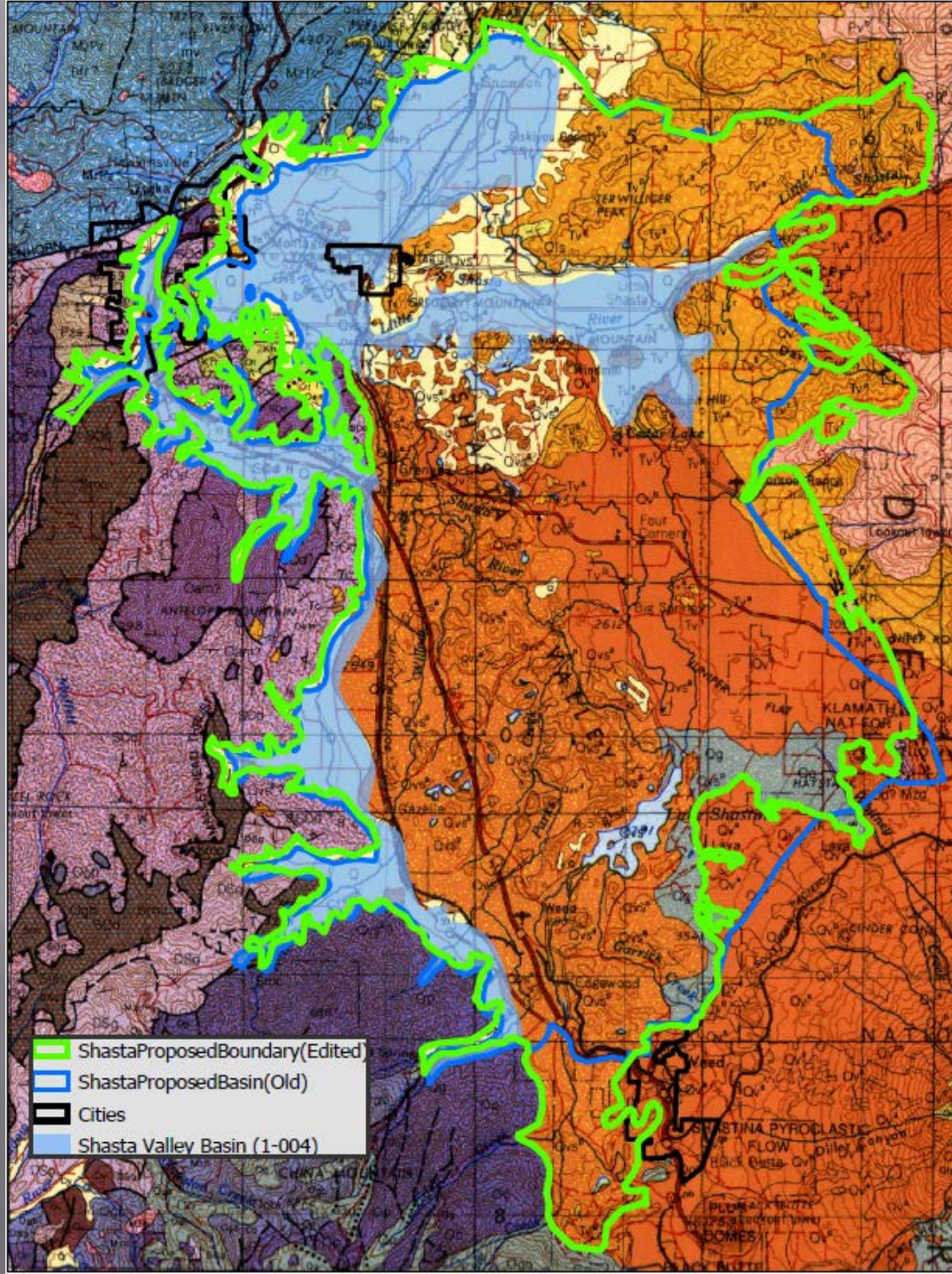


- ShastaProposedBoundary(Edited)
- ShastaProposedBasin(Old)
- Cities
- Shasta Valley Basin (1-004)

Shasta BBM

- ▣ Initial submission in early July
- ▣ Last minute edit to Shasta BBM application
 - Had to change 3 days before DWR deadline of 9/28
- ▣ *Scientific* submission so had to be strictly geological based. Our initial was more considered bot scientific & jurisdictional because of using roadways, hydrology/watershed regions, city limits, etc...for our boundaries
- ▣ DWR recommended using the *CA Geologic Survey's 1:250,000 scale 1987 Geologic Map of the Weed Quadrangle*
- ▣ This change still addresses the overall SGMA goal and reasoning behind our Shasta Basin modification





- ShastaProposedBoundary(Editor)
- ShastaProposedBasin(Old)
- Cities
- Shasta Valley Basin (1-004)

CENOZOIC

QUATERNARY

Holocene



Dredge and mine tailings



Alluvium



Landslide deposits



Dune and beach sand



Lake deposits



Shelf, slope, and basin deposits (*Offshore*)



Terrace deposits



Glacial deposits (*Outwash and moraine*)



Marine terrace deposits



Fluvial deposits (*Gravel, sand, and silt*)



Battery Formation (*Marine and continental; blue sandstone and clay*)



Undifferentiated Plio-Pleistocene marine and non-marine deposits



St. George Formation (*Marine; bluish-gray siltstone and shale*)



Marine mudstone undifferentiated (*Offshore*)



Tertiary gravels (*"Auriferous"*)



Tertiary continental deposits (*Conglomerate and sandstone*)



Wimer Formation (*Marine; friable yellow siltstone, sandstone, and conglomerate*)



Hornbrook Formation (*Marine; massive arkosic sandstone, conglomerate, and shale*)



Volcanic rocks (*a-andesite; b-basalt d-dacite; p-pyroclastic deposits pb-Black Butte pyroclastic flow ps-Shastina pyroclastic flow*)
* - Cinder cone or volcano



Volcanic rocks of Shasta Valley (*a-andesite; p-pyroclastic deposits*)



Volcanic rocks (*a-andesite; b-basalt*)
* - Cinder cone or volcano



Western Cascade Volcanics (*a-andesite with some basalt and dacite; p-andesite tuff breccia; t-rhyolite tuff; i-andesite and basalt intrusions and plugs; r-rhyolite domes*)

High Cascade Volcanics

TERTIARY

Pliocene

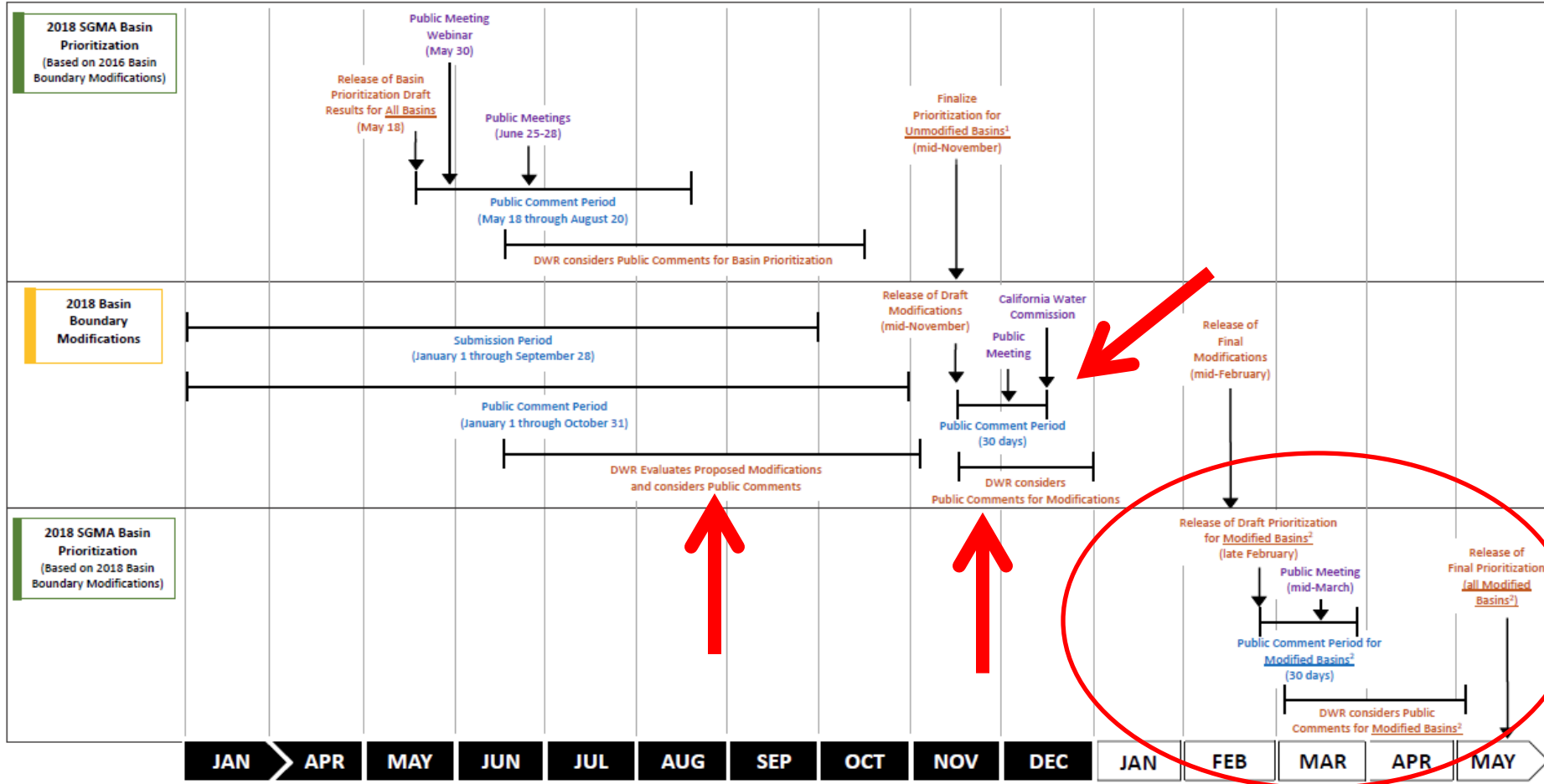
Pleistocene

Miocene

Next Steps/Timeline

- ▣ Sep 28 – Staff re-submitted edited BBM
- ▣ Oct 11, 2018 – Shasta GAC meeting
- ▣ Oct 16, 2018 – Flood Control/GSA Board meeting
- ▣ **Re-open comment period??*
- ▣ Nov 2018 – DWR – release statewide drafts
 - 30-day comment period, DWR public meeting, CA Water Commission
- ▣ Feb 2019 – DWR final release of BBM's
 - Draft release of prioritization's
 - 30-day public comment on prioritizations
- ▣ Spring 2019 – release of final prioritizations

2018 SGMA Basin Prioritization Timeline



LEGEND

2018
2019
DWR Action
Public Meeting
Public Input/Submission
Note: All dates and time periods are subject to change

July 24, 2018

¹All basins except those affected by potential basin boundary modification based on requests submitted as of September 28, 2018.

²All basins affected by potential basin boundary modification based on requests submitted as of September 28, 2018.