

JANUARY ADVISORY COMMITTEE MEETINGS

Scott Valley Groundwater Advisory Committee Meeting



LARRY WALKER
ASSOCIATES
science | policy | solutions



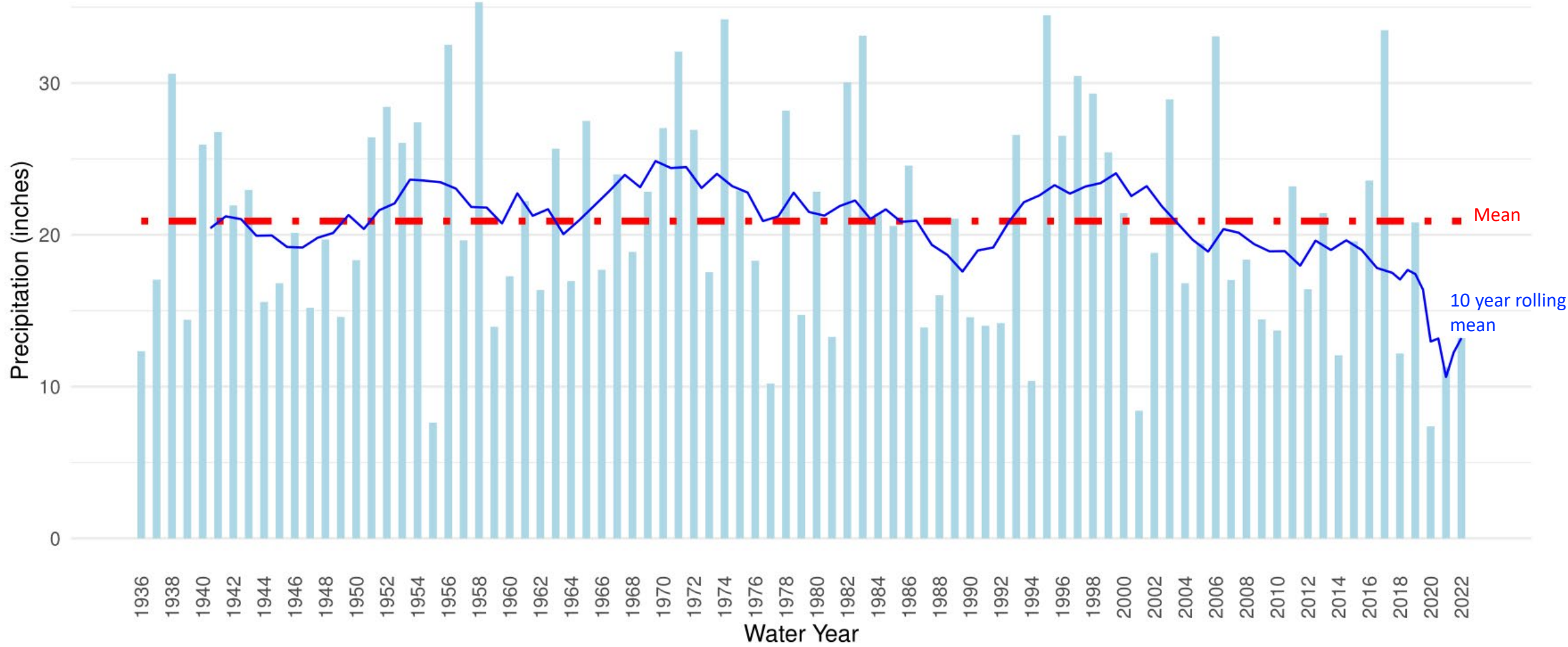
Technical Items

- Annual Report Preparation
- WY 2022 Conditions

Annual Report

- Annual reports are to be submitted each year on April 1st
- This report covers October 2021 to September 2022
- Annual Reports include:
 - GSA's progress in GSP implementation
 - Data collected from monitoring network
 - Groundwater extractions, surface water supply, total water use and changes in groundwater storage

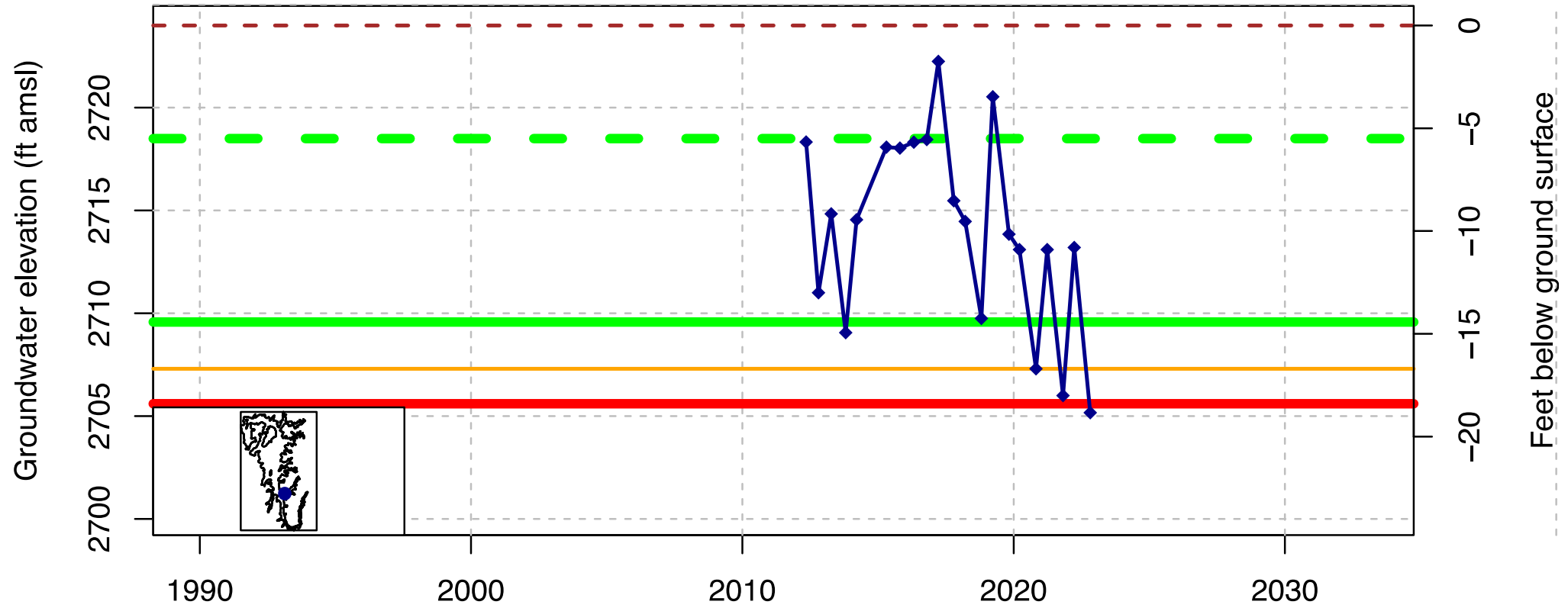
Update on Hydrologic Conditions-Precipitation



Update on Hydrologic Conditions-Hydrographs

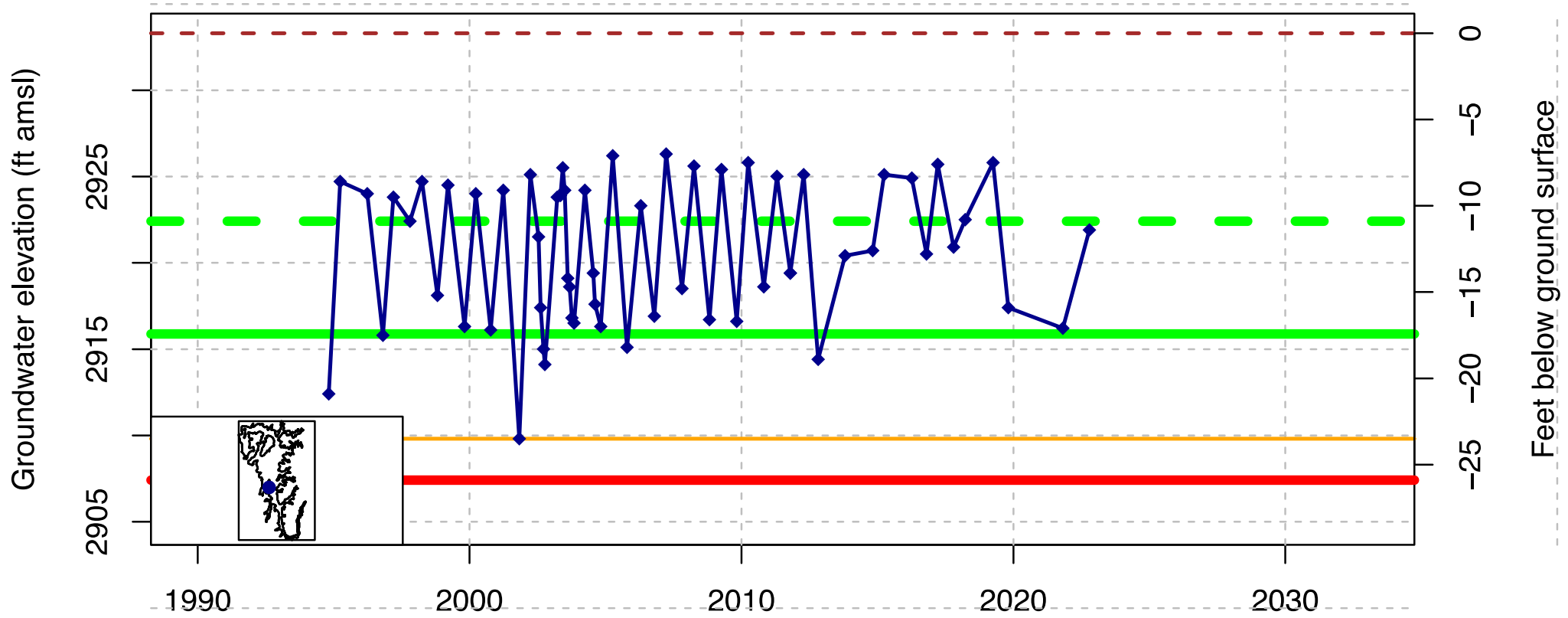
Hydrographs identified with an * may be missing one or more measurements from 2020-2022. These missing data points are being investigated.

DWR Stn_ID: ; well_code: 412455N1224899W001; well_name: SCV04; well_swn: NA



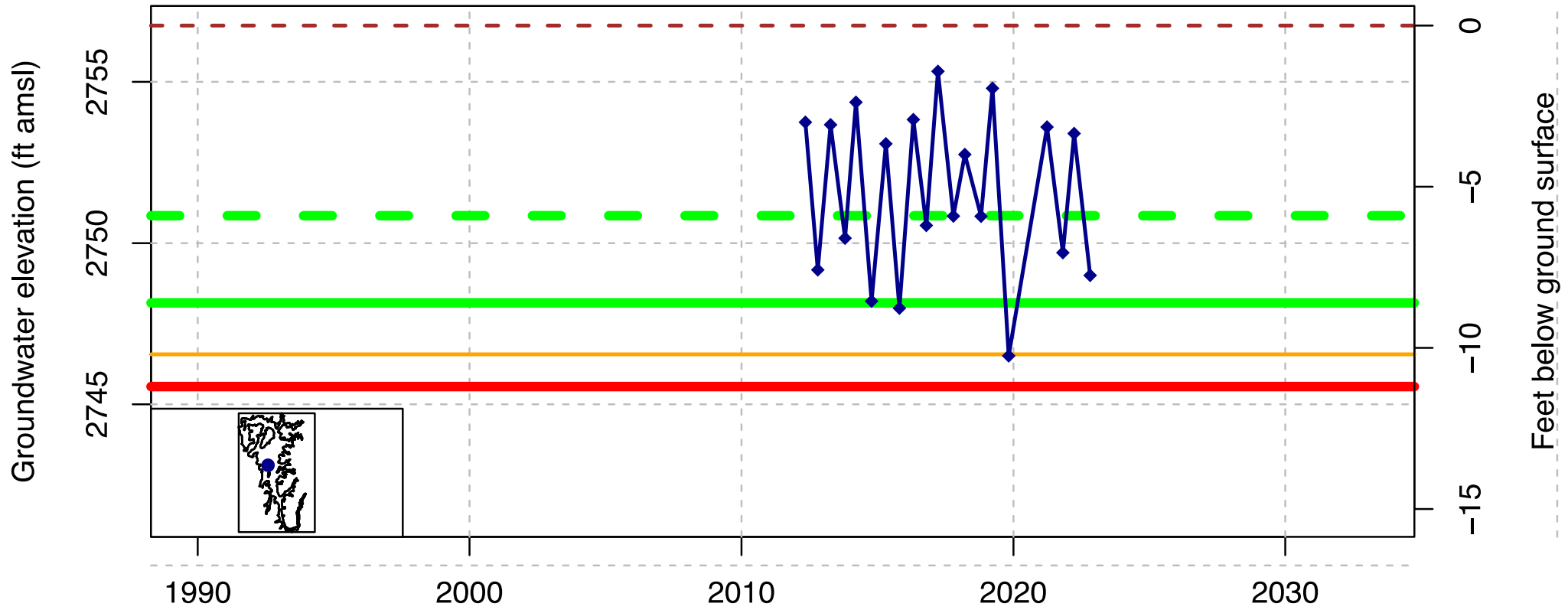
- - Ground Surface (2724 ft amsl)
- Measurable Objective (Upper Fall High) (6 ft bgs)
- Measurable Objective (Lower 75th Quantile) (14 ft bgs)
- Trigger (Fall Low) (17 ft bgs)
- Minimum Threshold (Exceptional Fall Low) (18 ft bgs)

* DWR Stn_ID: ; well_code: 414555N1228745W001; well_name: 42N09W27N002M; well_swn: 42N09W27N002M



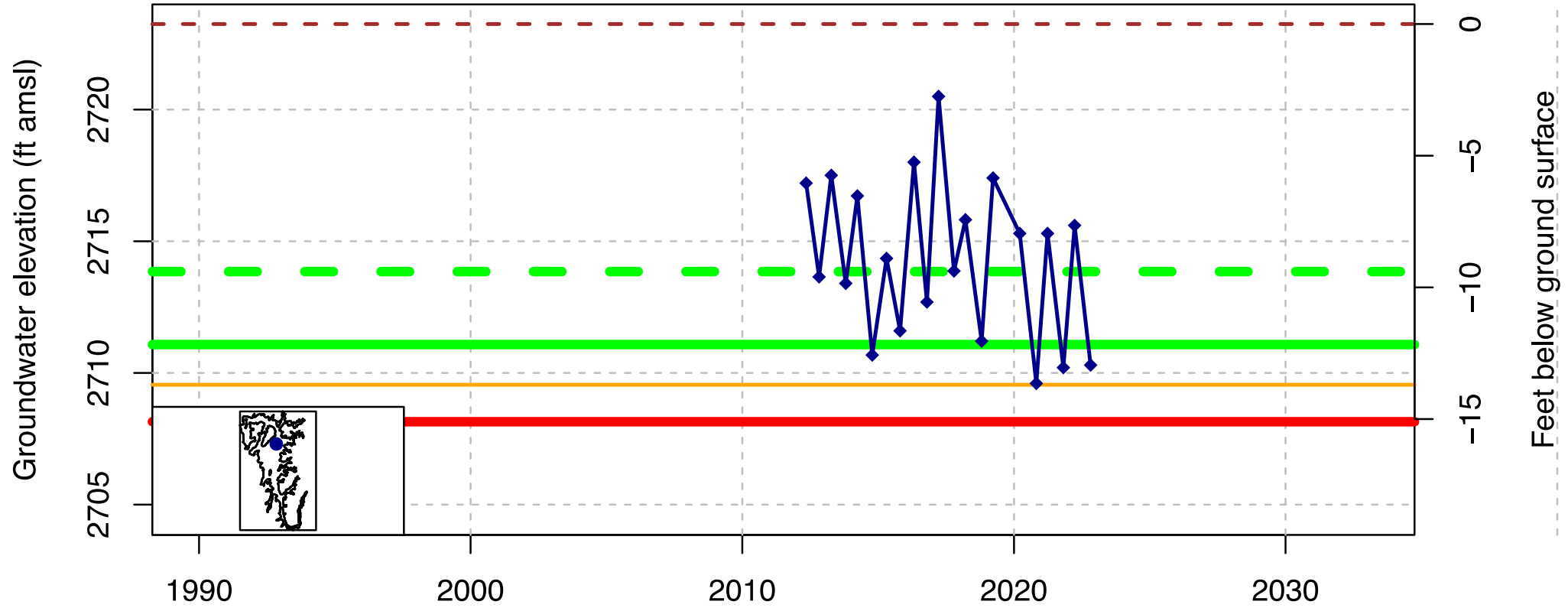
- - - Ground Surface (2933 ft amsl)
- Measurable Objective (Upper Fall High) (11 ft bgs)
- Measurable Objective (Lower 75th Quantile) (17 ft bgs)
- Trigger (Fall Low) (24 ft bgs)
- Minimum Threshold (Exceptional Fall Low) (26 ft bgs)

* DWR Stn_ID: ; well_code: 412990N1225279W001; well_name: SCV 02; well_swn: NA



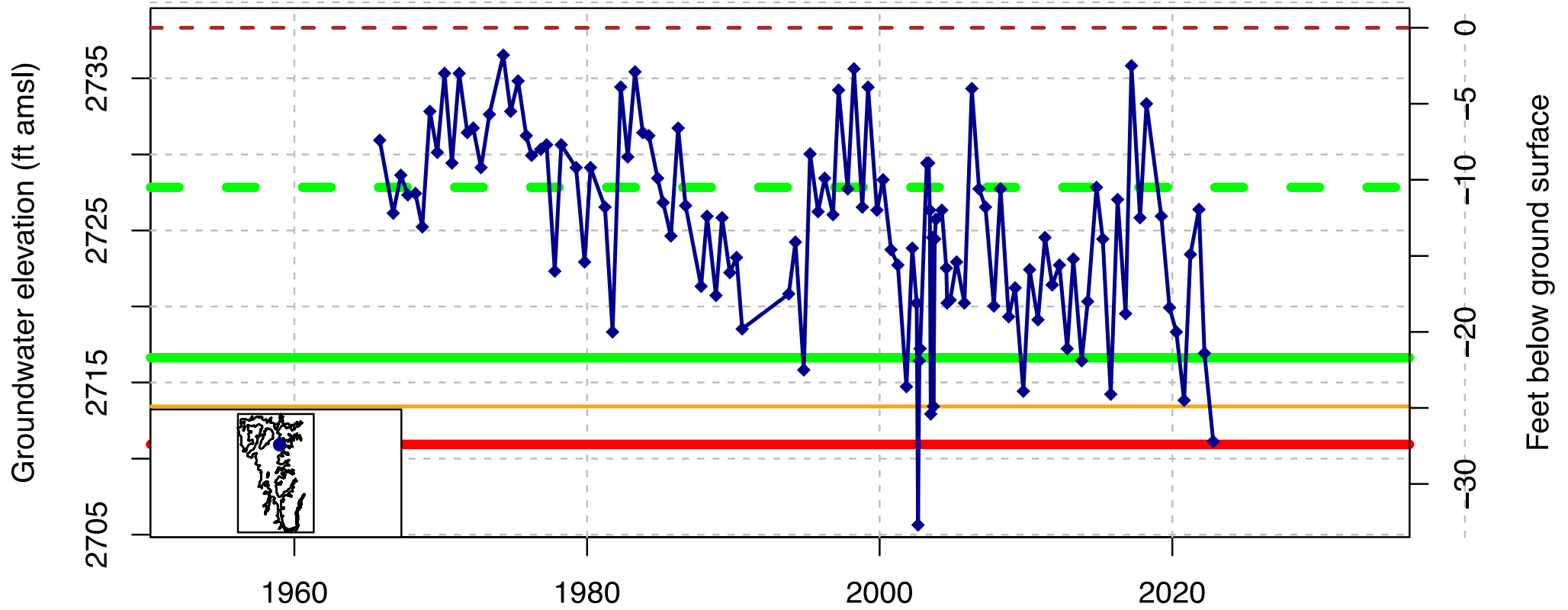
- - Ground Surface (2757 ft amsl)
- Measurable Objective (Upper Fall High) (6 ft bgs)
- Measurable Objective (Lower 75th Quantile) (9 ft bgs)
- Trigger (Fall Low) (10 ft bgs)
- Minimum Threshold (Exceptional Fall Low) (11 ft bgs)

DWR Stn_ID: ; well_code: 413348N1225123W001; well_name: SCV 01; well_swn: NA



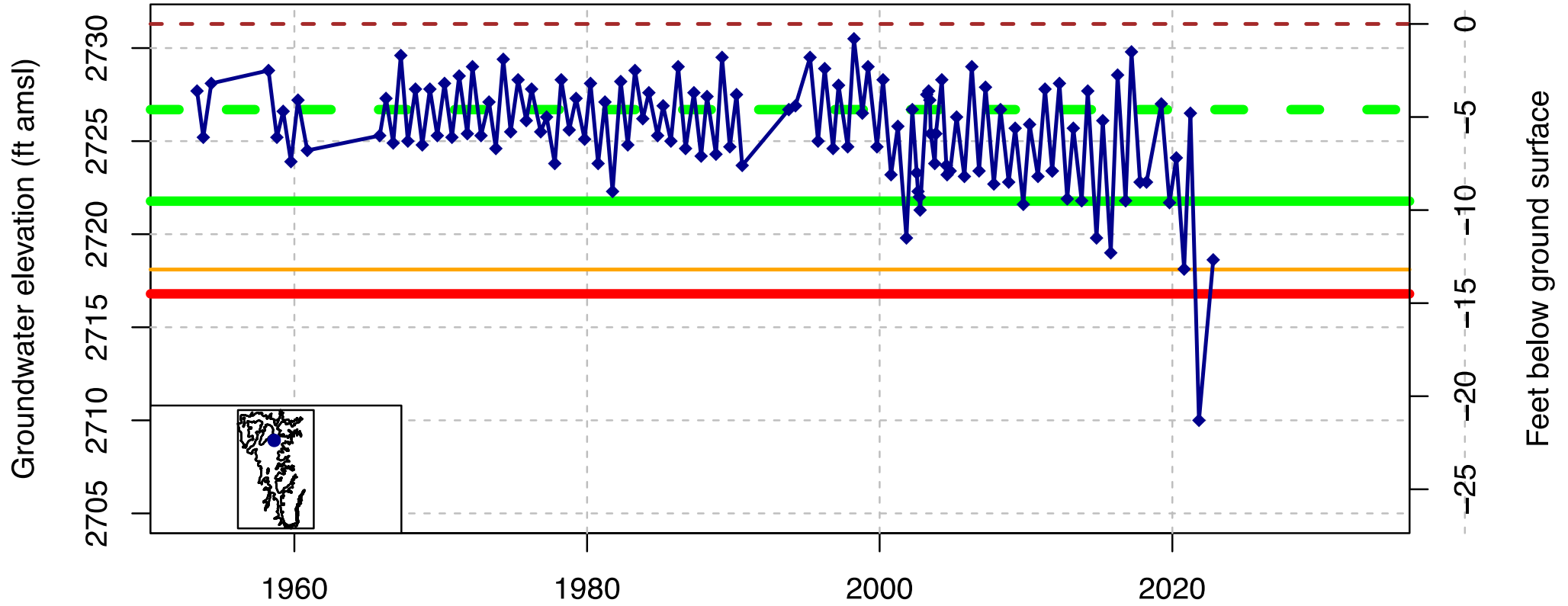
- - Ground Surface (2723 ft amsl)
- Measurable Objective (Upper Fall High) (9 ft bgs)
- Measurable Objective (Lower 75th Quantile) (12 ft bgs)
- Trigger (Fall Low) (14 ft bgs)
- Minimum Threshold (Exceptional Fall Low) (15 ft bgs)

DWR Stn_ID: ; well_code: 415635N1228315W001; well_name: 43N09W24F001M; well_swn: 43N09W24F001M



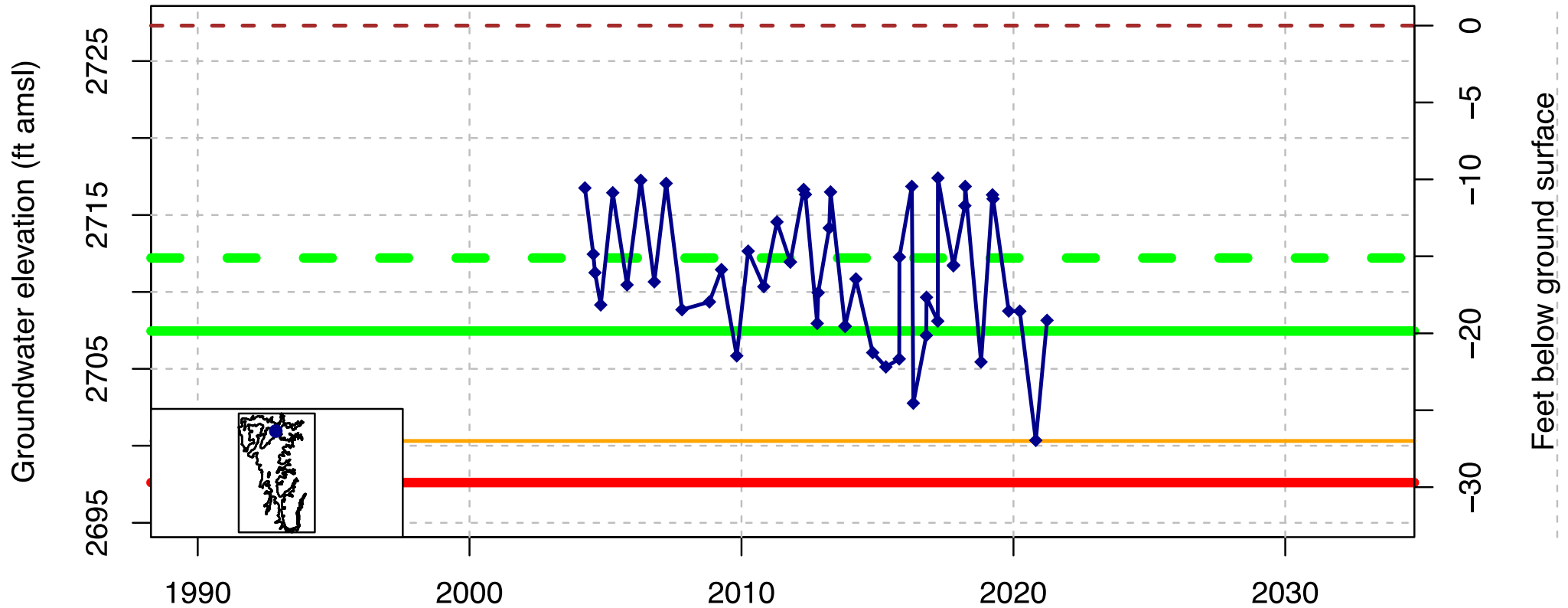
- - Ground Surface (2738 ft amsl)
- Measurable Objective (Upper Fall High) (10 ft bgs)
- Measurable Objective (Lower 75th Quantile) (22 ft bgs)
- Trigger (Fall Low) (25 ft bgs)
- Minimum Threshold (Exceptional Fall Low) (27 ft bgs)

* DWR Stn_ID: ; well_code: 415644N1228541W001; well_name: 43N09W23F001M; well_swn: 43N09W23F001M



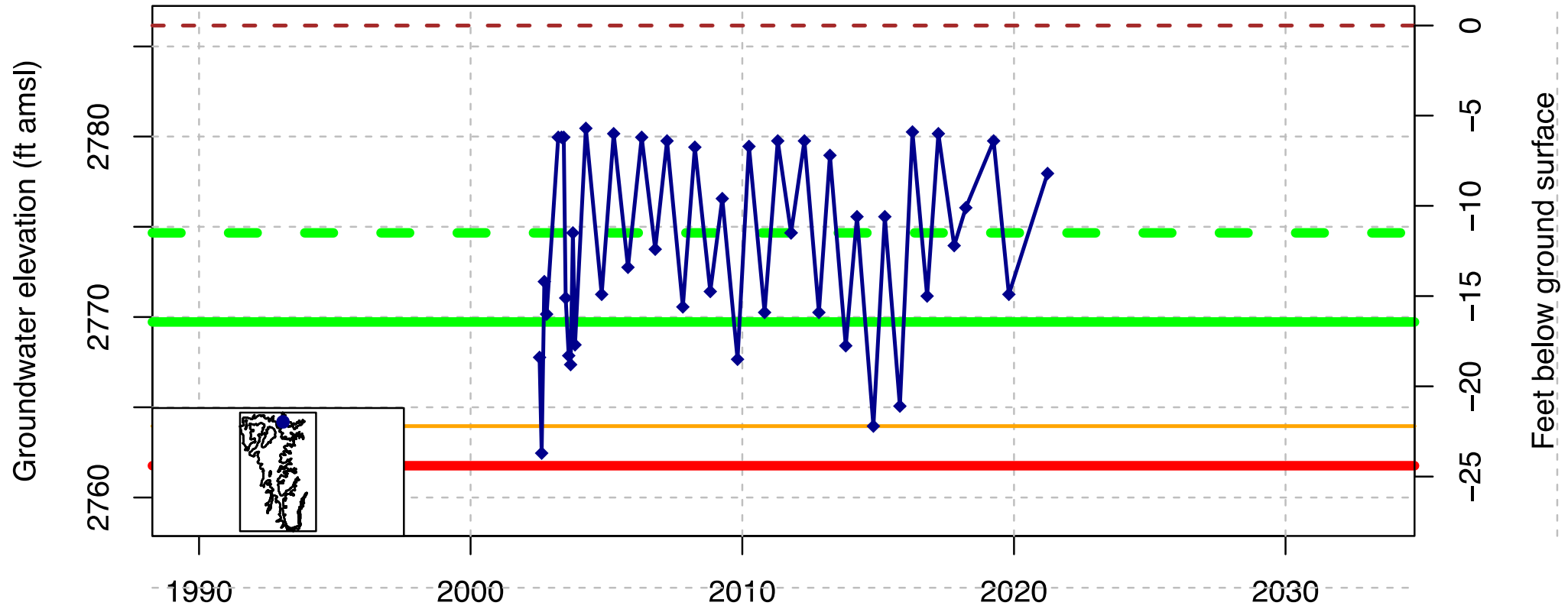
- - Ground Surface (2731 ft amsl)
- Measurable Objective (Upper Fall High) (5 ft bgs)
- Measurable Objective (Lower 75th Quantile) (10 ft bgs)
- Trigger (Fall Low) (13 ft bgs)
- Minimum Threshold (Exceptional Fall Low) (14 ft bgs)

* DWR Stn_ID: ; well_code: 416033N1228528W001; well_name: SCV03; well_swn: 43N09W02P002M



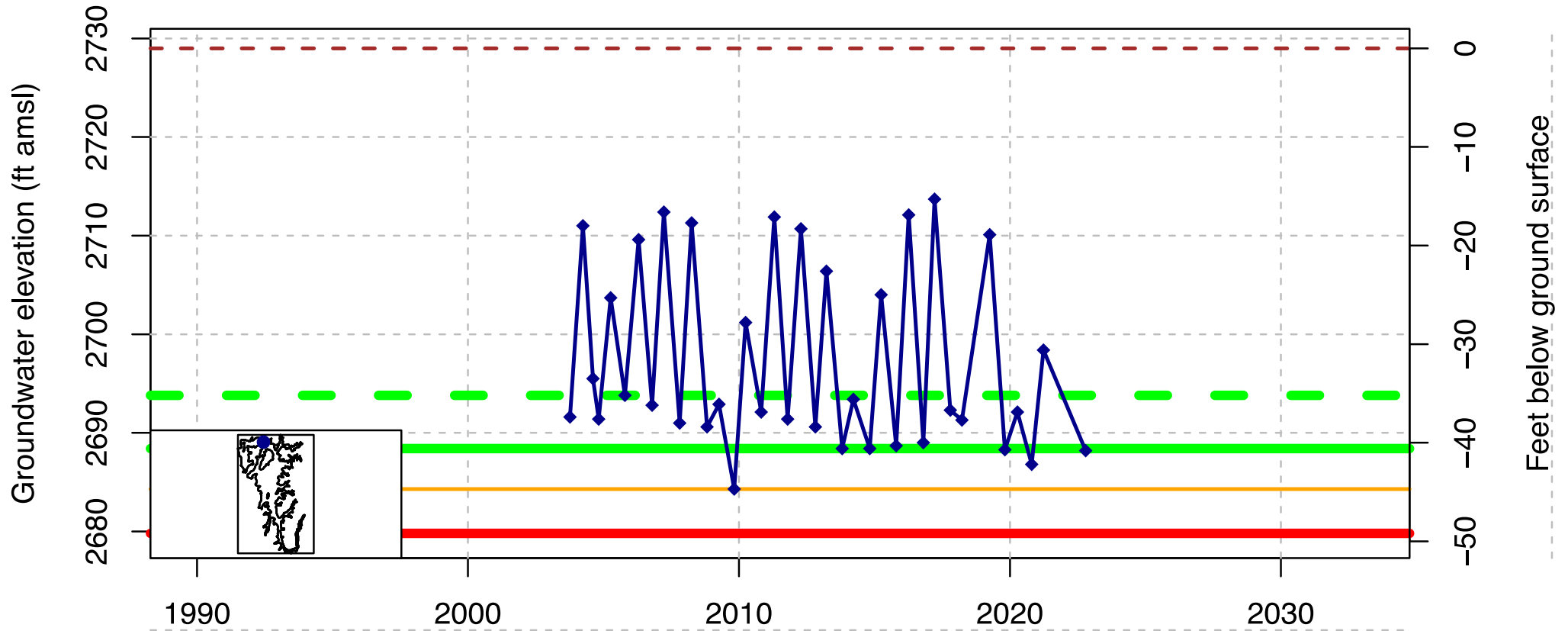
- - - Ground Surface (2727 ft amsl)
- Measurable Objective (Upper Fall High) (15 ft bgs)
- Measurable Objective (Lower 75th Quantile) (20 ft bgs)
- Trigger (Fall Low) (27 ft bgs)
- Minimum Threshold (Exceptional Fall Low) (30 ft bgs)

* DWR Stn_ID: ; well_code: 416288N1228303W001; well_name: 44N09W25R001M; well_swn: 44N09W25R001M



- - Ground Surface (2786 ft amsl)
- Measurable Objective (Upper Fall High) (12 ft bgs)
- Measurable Objective (Lower 75th Quantile) (16 ft bgs)
- Trigger (Fall Low) (22 ft bgs)
- Minimum Threshold (Exceptional Fall Low) (24 ft bgs)

* DWR Stn_ID: ; well_code: 416335N1228997W001; well_name: 44N09W29J001M; well_swn: 44N09W29J001M



- - Ground Surface (2729 ft amsl)
- Measurable Objective (Upper Fall High) (35 ft bgs)
- Measurable Objective (Lower 75th Quantile) (41 ft bgs)
- Trigger (Fall Low) (45 ft bgs)
- Minimum Threshold (Exceptional Fall Low) (49 ft bgs)



Thank You